

DESIGN. BUILD. EMPOWER.

custer



Standing-height tables foster creativity



Steelcase campfire lounge setting



Media center accommodates a full classroom with Steelcase Node chairs & Fleetwood tables

South Christian High School

THE CHALLENGE

South Christian High School is an independent private school in southern Kent County that currently serves over 600 students.

The school's previous location, built in 1952, had foregone multiple additions and renovations over the years to accommodate the school's expanding enrollment, yet more needed to be done to deliver 21st century learning spaces in a competitive education market.

In 2016, the South Christian High School Board of Directors unanimously voted to accept the single largest donation pledge in the history of South Christian High School. This generous gift was designated specifically for the new education and sports facilities planned on a 130-acre lot on Kalamazoo Ave. in Bryon Center.

By 2017, shovels had broken ground on the school's new site location, marking the school's largest and most rewarding pursuit in its 66 year history.

LOCATION & SPECS

South Christian High School
Byron Center, MI
December 2018
175,000 square feet

SOLUTIONS PROVIDED

Free standing furniture for the entire building, including:
Classrooms
Library
Common spaces
Offices
Staff lounge
Atrium

STRATEGIC PARTNERS

AMDG Architects, Inc.
Via Design, Inc.
Dan Vos Construction Company

FEATURED PRODUCTS

Steelcase Node seating
Steelcase Campfire Lounge
Fleetwood tables
Fleetwood storage



THE SOLUTION



Height-adjustable tables promote movement & collaboration

“Custer’s agile team allowed us to flex as our project changed and provided incredible support right through installation.”
— Jim Peterson, South Christian High School Head of School

Custer worked with South Christian High School staff, AMDG Architects, Via Design, and Dan Vos Construction to create a vibrant, future-focused space for students and educators, while keeping enrollment growth in mind for the school’s expanding student body.

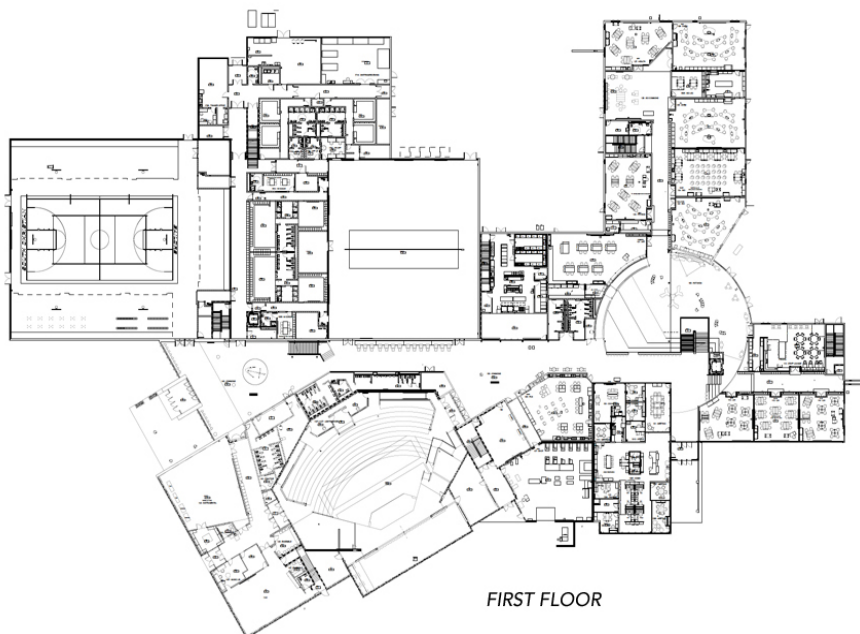
The focus was set on creating collaborative spaces, while maintaining flexibility for both students and teachers to engage with each environment.

Custer provided free standing furniture throughout the entire building, including classrooms, common spaces, offices, staff lounge, atrium, and library.

Three different classroom package options were provided to teaching staff to choose from in order to best suit their class style’s needs.

For collaboration outside of the classroom, five break out commons spaces were created throughout the facility, and the library was furnished to accommodate a full classroom of students.

South Christian High School’s new 175,000 square foot facility is an adaptive, dynamic educational environment for students and staff.



FIRST FLOOR



SECOND FLOOR